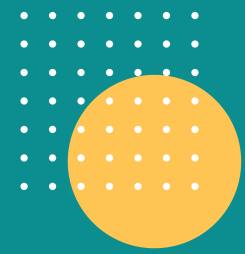


# DEAF PARTICIPANTS NEEDED!



We are looking for individuals to help with a research study **online** through East Tennessee State University!



**Interested? Please Scan The QR Code Below:**



## Eligibility Requirements:

- Must be 18 years or older
- Present in the United States
- Must be Deaf
- Must have English as their primary language
- Must have internet access


## How Does This Benefit Me?

- To help find measurement gaps and communication barriers in healthcare for the Deaf community.
- Identify areas of need for the Deaf community in religious services and substance use recovery services.

## Purpose & Description of Study:

- Participants will take two surveys about substance use and religiosity that have been recently translated into ASL.
- This study will help healthcare services use proper forms of communication for this community.
- This study should take 20-30 minutes.

**Questions? Please Reach Out to Angela Masiello:**

 330-931-7197

 [masielloa@etsu.edu](mailto:masielloa@etsu.edu)



Approved by ETSU Campus IRB /Approval Date: August 26, 2024

1185 West Mountain View Rd. Johnson City, TN. 37604